

VANITIES
BY ELECTRIC MIRROR®



EM

ELEANOR™

Dimensions: 74"W x 24"D x 36"H

Materials:

- Countertop: Custom Quartz, Polished
- Metal Finish: Polished Sunset Bronze (BZ-11)
- Wood Finish: Mid-Century (WD-1001), 30% sheen

Metal Finish



Polished Sunset
Bronze

Wood Finish



Mid-Century

Countertop



Custom Quartz



Features & Benefits

- 3 cm polished quartz countertop in a custom tan.
- Quartz surfaces are highly resilient, nonporous, and scratch- and stain-resistant.
- Includes two (2) rectangular undermount vitreous China sinks.
- Stainless steel base finished in Polished Sunset Bronze (BZ-11).
- Crafted with 3/4" plywood substrate with maple veneer.
- Stained wood finish in Mid-Century (WD-1001) on solid maple, with a 30% sheen achieved through a multistep finishing process.
- Features two (2) slatted wood shelves for towel storage, complemented by a front metal rail for an added touch of elegance.
- Freestanding design with cleat attachment for added security and stability.

Manufacturing & Quality Requirements

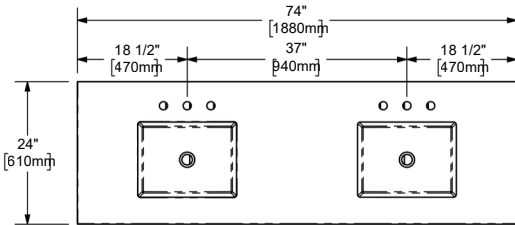
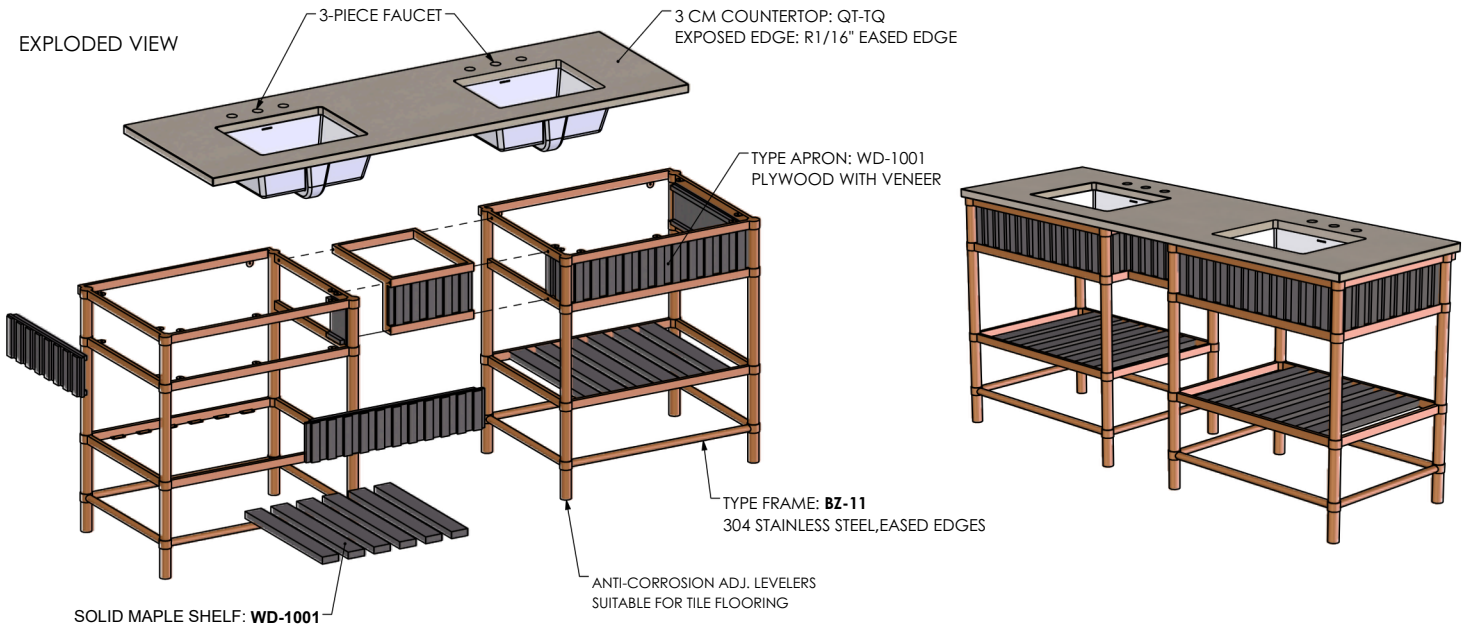
- All items must be of contract-grade quality, suitable for high-end hospitality use.
- Products must comply with local, state, national, and international codes, including ADA guidelines and fire/life safety regulations.
- Manufacturer must submit certificates of compliance, installation guidelines, maintenance instructions, and warranty documentation.
- All wood must be kiln-dried hardwood, marine-grade plywood, or waterproof MDF.
- Veneers must be A/B grade, with consistent grain and finish.
- All exposed edges must be sealed for moisture resistance.
- Finishes must be commercial-grade catalyzed lacquer, resistant to water, alcohol, and chemical stains.
- Vanities must be impact- and scratch-resistant, with matching finish on all sides and interiors.
- Drawer boxes must feature five-sided dovetail construction. Where plumbing interference exists, a U-shaped configuration should be used to maintain functionality without compromising structural integrity.
- All work must be corner blocked, glued, and reinforced with screws or appropriate mechanical fasteners.
- Use premium undermount soft-close slides and concealed soft-close hinges.
- All metal components and hardware must be made from 304 stainless steel, offering rust and corrosion resistance suitable for most environments. For coastal or high-humidity locations, 316 stainless steel must be used to ensure enhanced durability and protection against salt exposure.
- All exposed hardware finishes must be approved prior to production.
- Leveling glides must be heavy-duty, non-rust nylon, sized and colored to match the base or leg finish.
- Units must be properly packaged to prevent damage or soiling during transit.
- Shipping boxes must be labeled with property name, item number, PO number, and spec number.
- All products must be designed to fit within service elevators, corridors, and doorways. If not, items must be shipped in knock-down state for on-site assembly.
- Manufacturers must submit scaled shop drawings with full details (plans, elevations, sections, materials, finishes, hardware, dimensions).
- Finish samples must be submitted on appropriate substrates for approval prior to production.
- Review time for submittals is 5 business days.
- All substitutions or changes must be approved in writing by the designer.
- Coordinate with general contractor to confirm elevator cab sizes, corridor widths, and mounting heights.
- Manufacturers must ensure products are structurally sound, properly weighted to prevent tipping, and bolted where required (e.g., earthquake zones).

TECHNICAL DRAWINGS

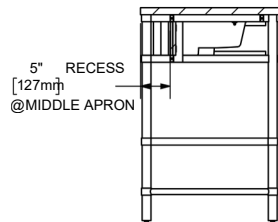
VANITIES

BY ELECTRIC MIRROR®

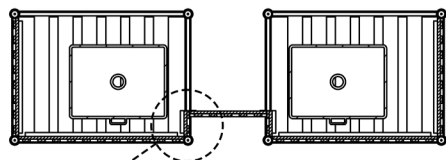
BZ-11: POLISHED SUNSET BRONZE
WD-1001: MID-CENTURY, SYAIN ON MAPLE, 20% SHEEN
QT-TQ: CUSTOM TAN QUARTZ, POLISHED
SINK: SERANO, UNDERMOUNT VITREOUS CHINA WHITE
FAUCET: 3-PIECE FAUCET



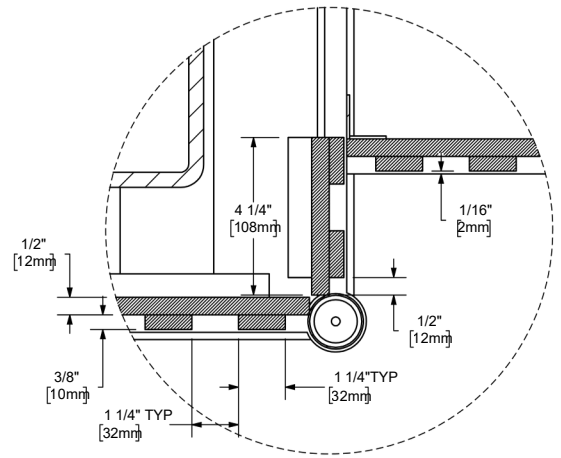
TOP VIEW



SECTION BA-BA

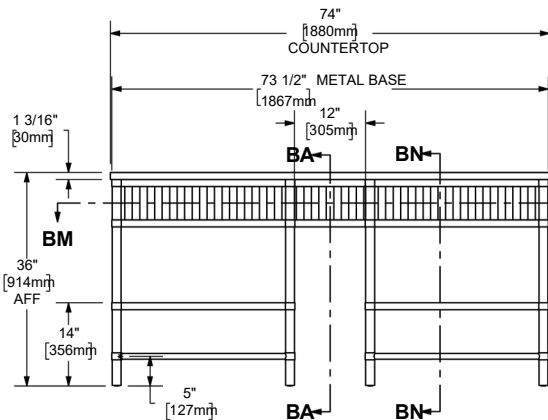
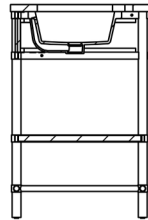


SECTION BM-BM

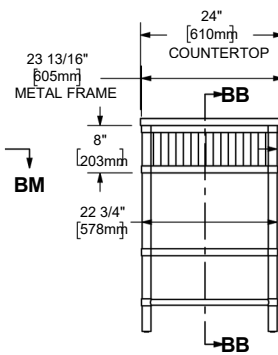


DETAIL BP 1 : 4

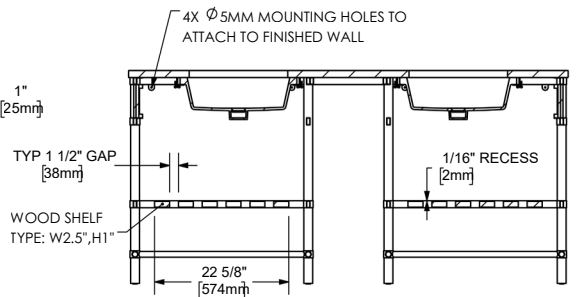
SECTION BN-BN



FRONT VIEW



RIGHT VIEW



SECTION BB-BB