

VANITIES
BY ELECTRIC MIRROR®



EM

ELISE™

Dimensions: 60"W x 24"D x 34"H

Materials:

- Countertop: Calcutta Gold (QT-1006), Polished
- Wood Finish: Chocolate Lush (WD-1007), 30% sheen
- Metal Finish: Brushed Sunset Bronze (BZ-11)

Metal Finish



Brushed Sunset
Bronze

Wood Finish



Chocolate Lush

Countertop



Calcutta Gold
Quartz



Features & Benefits

- 3 cm polished Calcutta Gold (QT-1006) Quartz countertop.
- Quartz surfaces are highly resilient, nonporous, and scratch-and stain-resistant.
- Includes a rectangular undermount vitreous China sink.
- Stainless steel base finished in Brushed Sunset Bronze (BZ-11).
- Metal base features a thick squared frame outlining each shelf, with additional squared notches where the shelves sit. The base is open and includes an apron with two faux knobs for added detail.
- Crafted with 3/4" plywood substrate with oak veneer.
- Stained wood finish in Chocolate Lush (WD-1007) on Oak veneer, with a 30% sheen achieved through a multistep finishing process.
- Features three (3) solid wood shelves for storage, with two (2) smaller shelves on the left and right sides and one (1) bottom shelf that spans the full width of the vanity base, providing additional open storage.
- Freestanding design with cleat attachment for added security and stability.

Manufacturing & Quality Requirements

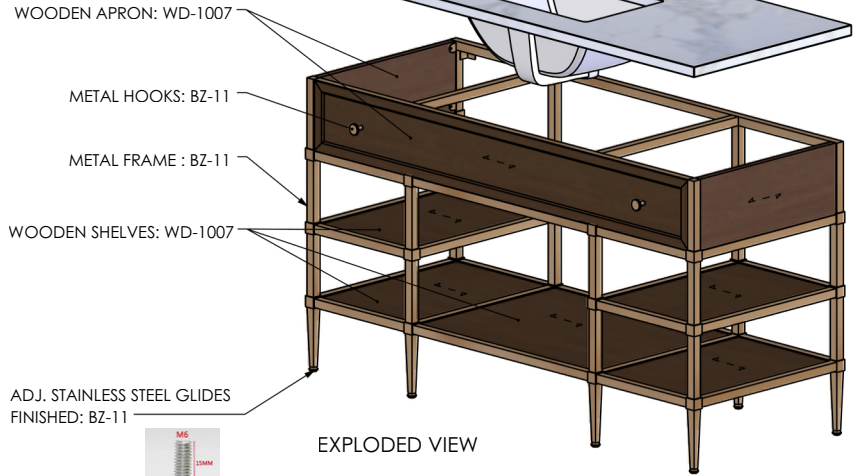
- All items must be of contract-grade quality, suitable for high-end hospitality use.
- Products must comply with local, state, national, and international codes, including ADA guidelines and fire/life safety regulations.
- Manufacturer must submit certificates of compliance, installation guidelines, maintenance instructions, and warranty documentation.
- All wood must be kiln-dried hardwood, marine-grade plywood, or waterproof MDF.
- Veneers must be A/B grade, with consistent grain and finish.
- All exposed edges must be sealed for moisture resistance.
- Finishes must be commercial-grade catalyzed lacquer, resistant to water, alcohol, and chemical stains.
- Vanities must be impact- and scratch-resistant, with matching finish on all sides and interiors.
- Drawer boxes must feature five-sided dovetail construction. Where plumbing interference exists, a U-shaped configuration should be used to maintain functionality without compromising structural integrity.
- All work must be corner blocked, glued, and reinforced with screws or appropriate mechanical fasteners.
- Use premium undermount soft-close slides and concealed soft-close hinges.
- All metal components and hardware must be made from 304 stainless steel, offering rust and corrosion resistance suitable for most environments. For coastal or high-humidity locations, 316 stainless steel must be used to ensure enhanced durability and protection against salt exposure.
- All exposed hardware finishes must be approved prior to production.
- Leveling glides must be heavy-duty, non-rust nylon, sized and colored to match the base or leg finish.
- Units must be properly packaged to prevent damage or soiling during transit.
- Shipping boxes must be labeled with property name, item number, PO number, and spec number.
- All products must be designed to fit within service elevators, corridors, and doorways. If not, items must be shipped in knock-down state for on-site assembly.
- Manufacturers must submit scaled shop drawings with full details (plans, elevations, sections, materials, finishes, hardware, dimensions).
- Finish samples must be submitted on appropriate substrates for approval prior to production.
- Review time for submittals is 5 business days.
- All substitutions or changes must be approved in writing by the designer.
- Coordinate with general contractor to confirm elevator cab sizes, corridor widths, and mounting heights.
- Manufacturers must ensure products are structurally sound, properly weighted to prevent tipping, and bolted where required (e.g., earthquake zones).

SINK (VS): # 2402
FAUCET: 3-PIECE FAUCET
BZ-11: Brushed Sunset Bronze (BZ-11)
WD-1007: Chocolate Lush, 30% sheen
QT-1006: Calcutta Gold, Polished

COUNTERTOP: QT-1006
 EXPOSED EDGE: R1/16" EASED EDGE



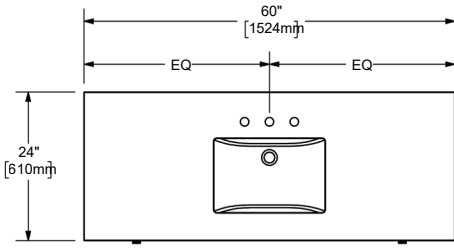
PERSPECTIVE VIEW



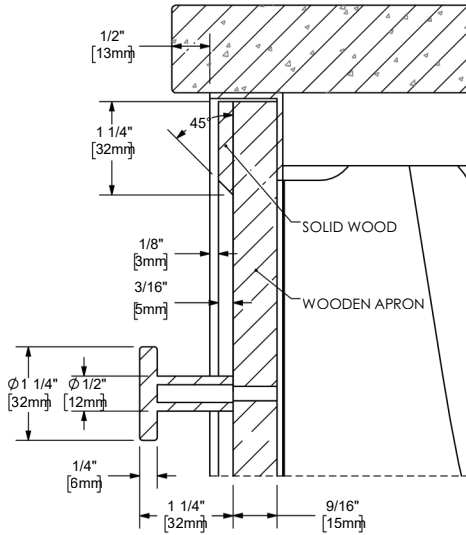
ADJ. STAINLESS STEEL GLIDES
 FINISHED: BZ-11



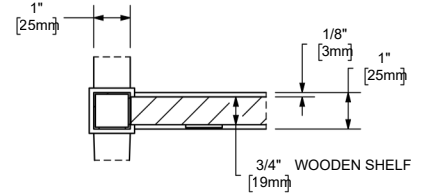
EXPLODED VIEW



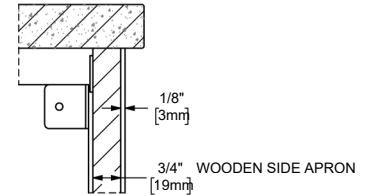
TOP VIEW



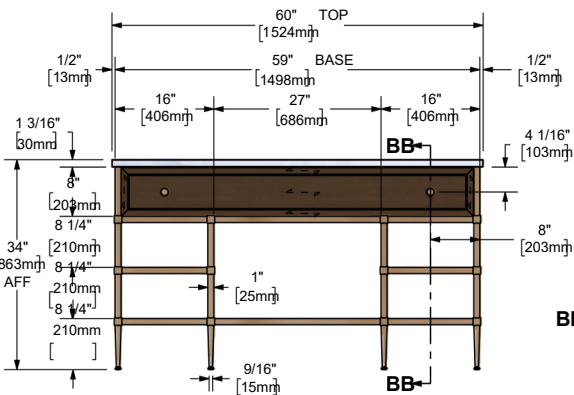
DETAIL BC 1 : 2



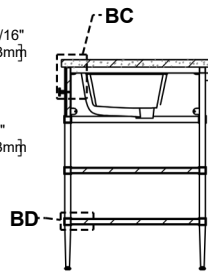
DETAIL BD 1 : 4



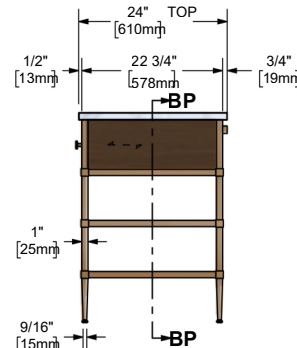
DETAIL BR 1 : 4



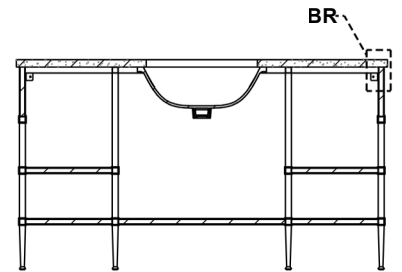
FRONT VIEW



SECTION BB-BB



RIGHT VIEW



SECTION BP-BP