



EM

MADISON™

Dimensions: 62" W x 21" H x 32" D

#### Materials:

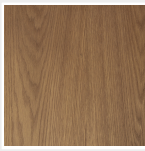
- Countertop: Urban Concrete (QT-1008), Polished
- Wood Finish: Warm Honey (WD-1009), 20% sheen
- Metal Finish: Oil Rubbed Bronze (BZ-47)

Countertop



Urban Concrete

Wood Finish



Warm Honey

Metal Finish



Oil Rubbed Bronze



## Features & Benefits

- 5.08 cm (2") polished Urban Concrete (QT-1008) Quartz countertop.
- Quartz surfaces are highly resilient, nonporous, and scratch-and stain-resistant.
- Includes two COM vessel sinks.
- Crafted with 3/4" plywood substrate with quartersawn oak veneer.
- Stained wood finish in Warm Honey (WD-1009) on Quartersawn Oak veneer, with a 20% sheen achieved through a multistep finishing process.
- Stainless steel metal accent finished in Oil Rubbed Bronze (BZ-47).
- Features two (2) 5-sided dovetail drawer boxes for additional storage. The top drawer is U-shaped, thoughtfully designed to accommodate plumbing while maintaining exceptional strength and durability.
- Equipped with premium undermount soft-close drawer slides for smooth, quiet operation.
- Motion-sensor lighting discreetly located under the bottom of the vanity base, automatically illuminates upon approach. Designed as a plug-in for easy replacement.
- Features two open cubbies for convenient storage.
- Wall-mounted design with cleat attachment for easy installation.

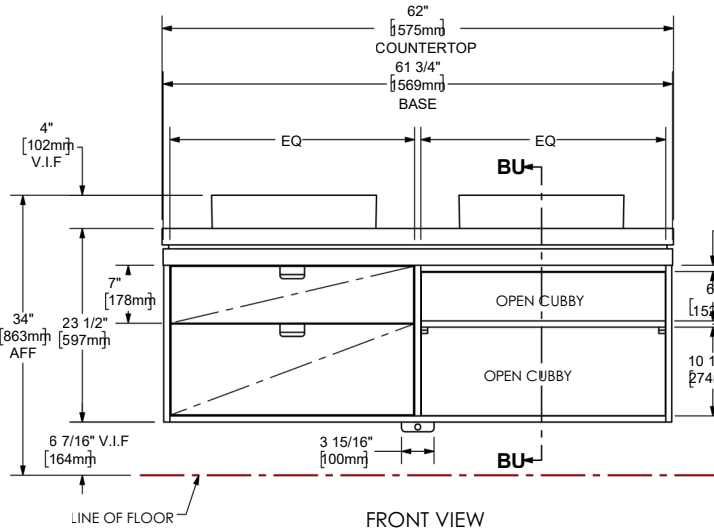
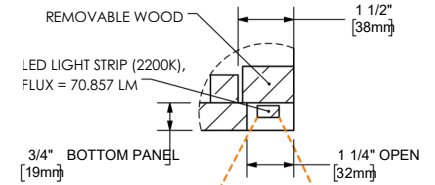
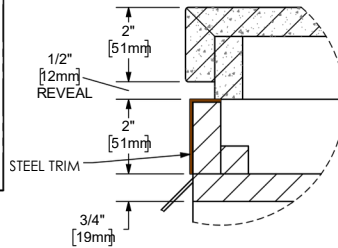
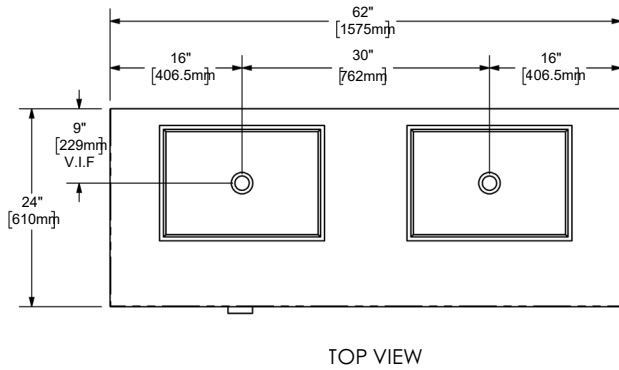
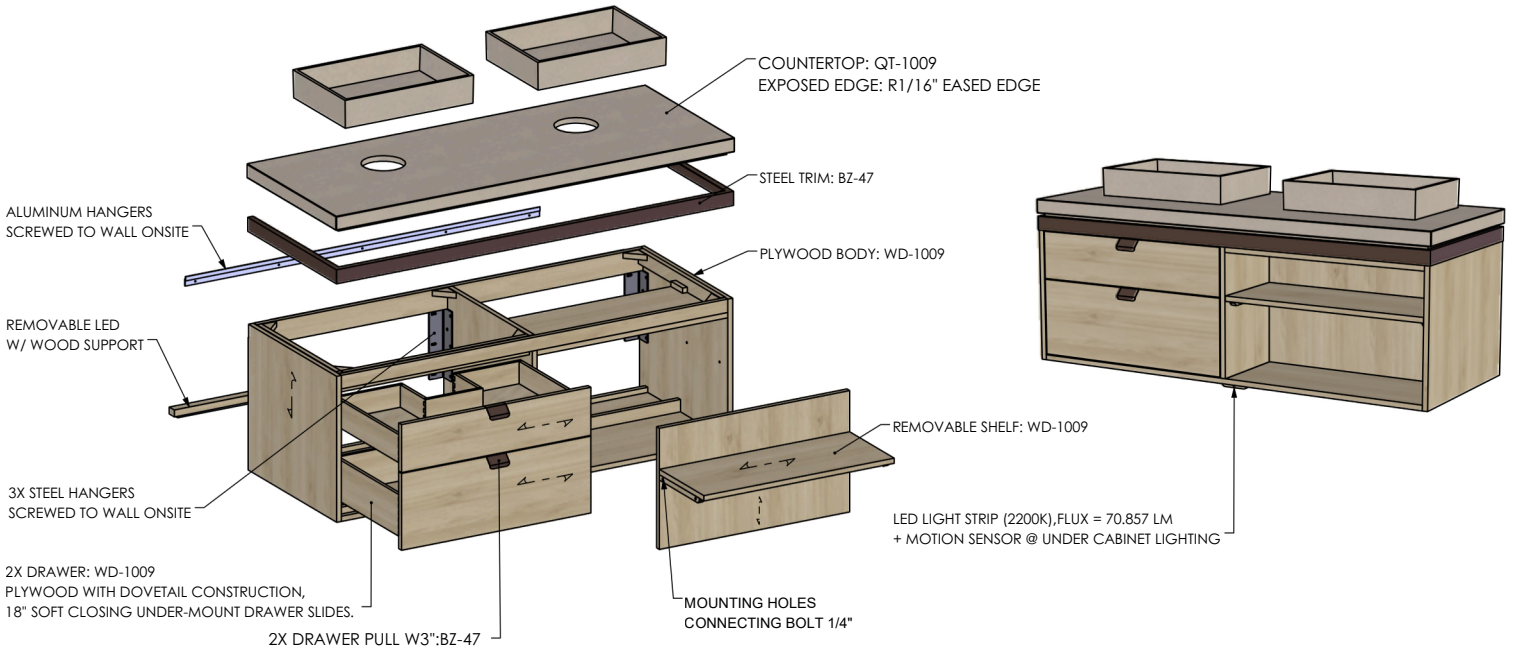
## Manufacturing & Quality Requirements

- All items must be of contract-grade quality, suitable for high-end hospitality use.
- Products must comply with local, state, national, and international codes, including ADA guidelines and fire/life safety regulations.
- Manufacturer must submit certificates of compliance, installation guidelines, maintenance instructions, and warranty documentation.
- All wood must be kiln-dried hardwood, marine-grade plywood, or waterproof MDF.
- Veneers must be A/B grade, with consistent grain and finish.
- All exposed edges must be sealed for moisture resistance.
- Finishes must be commercial-grade catalyzed lacquer, resistant to water, alcohol, and chemical stains.
- Vanities must be impact- and scratch-resistant, with matching finish on all sides and interiors.
- Drawer boxes must feature five-sided dovetail construction. Where plumbing interference exists, a U-shaped configuration should be used to maintain functionality without compromising structural integrity.
- All work must be corner blocked, glued, and reinforced with screws or appropriate mechanical fasteners.
- Use premium undermount soft-close slides and concealed soft-close hinges.
- All metal components and hardware must be made from 304 stainless steel, offering rust and corrosion resistance suitable for most environments. For coastal or high-humidity locations, 316 stainless steel must be used to ensure enhanced durability and protection against salt exposure.
- All exposed hardware finishes must be approved prior to production.
- Leveling glides must be heavy-duty, non-rust nylon, sized and colored to match the base or leg finish.
- Units must be properly packaged to prevent damage or soiling during transit.
- Shipping boxes must be labeled with property name, item number, PO number, and spec number.
- All products must be designed to fit within service elevators, corridors, and doorways. If not, items must be shipped in knock-down state for on-site assembly.
- Manufacturers must submit scaled shop drawings with full details (plans, elevations, sections, materials, finishes, hardware, dimensions).
- Finish samples must be submitted on appropriate substrates for approval prior to production.
- Review time for submittals is 5 business days.
- All substitutions or changes must be approved in writing by the designer.
- Coordinate with general contractor to confirm elevator cab sizes, corridor widths, and mounting heights.
- Manufacturers must ensure products are structurally sound, properly weighted to prevent tipping, and bolted where required (e.g., earthquake zones).

# TECHNICAL DRAWINGS

# VANITIES BY ELECTRIC MIRROR®

BZ-47: OIL RUBBED BRONZE  
 WD-1009: WARM HONEY, QUARTERSAWN OAK VENEER, 20% SHEEN  
 QT-1008: URBAN CONCRETE QUARTZ, POLISHED  
 SINK: RECTANGULAR VESSEL SINK (3D MODEL FOR REFERENCE ONLY)  
 FAUCET: @ FINISHED WALL



DETAIL BW 1 : 4

DETAIL BV 1 : 4

