



EM

MONTEREY™

Dimensions: 30"W x 24"D x 24"H

#### Materials:

- Wood Finish: Sabre (WD-1019)
- Countertop: Blanco Carrara (QT-1021), Polished

Wood Finish



Sabre

Countertop



Blanco Carrara  
Quartz

EM Mirror: [Eminence™ Lighted Mirror](#)



## Features & Benefits

- 2 cm polished quartz countertop in Blanco Carrara (QT-1021), includes a 3" backsplash.
- Quartz surfaces are highly resilient, nonporous, and scratch-and stain-resistant.
- Includes a rectangular undermount vitreous China sink.
- Crafted with 3/4" plywood substrate with solid oak.
- Showcases a reeded design crafted from solid oak, finished in Sabre (WD-1019) for a rich, natural texture.
- Top tilt-down tray features an integrated matte black metal organizer and a built-in charging port with two (2) outlets, one (1) USB, one (1) USB-C. Designed as a plug-in for easy installation and replacement.
- Features two (2) 5-sided dovetail drawer boxes for additional storage. The top drawer is U-shaped, thoughtfully designed to accommodate plumbing while maintaining exceptional strength and durability.
- Equipped with premium undermount soft-close drawer slides for smooth, quiet operation.
- Motion-sensor lighting discreetly located under the bottom of the vanity base, automatically illuminates upon approach. Designed as a plug-in for easy replacement.
- Wall-mounted design with cleat attachment for easy installation.

## Manufacturing & Quality Requirements

- All items must be of contract-grade quality, suitable for high-end hospitality use.
- Products must comply with local, state, national, and international codes, including ADA guidelines and fire/life safety regulations.
- Manufacturer must submit certificates of compliance, installation guidelines, maintenance instructions, and warranty documentation.
- All wood must be kiln-dried hardwood, marine-grade plywood, or waterproof MDF.
- Veneers must be A/B grade, with consistent grain and finish.
- All exposed edges must be sealed for moisture resistance.
- Finishes must be commercial-grade catalyzed lacquer, resistant to water, alcohol, and chemical stains.
- Vanities must be impact- and scratch-resistant, with matching finish on all sides and interiors.
- Drawer boxes must feature five-sided dovetail construction. Where plumbing interference exists, a U-shaped configuration should be used to maintain functionality without compromising structural integrity.
- All work must be corner blocked, glued, and reinforced with screws or appropriate mechanical fasteners.
- Use premium undermount soft-close slides and concealed soft-close hinges.
- All metal components and hardware must be made from 304 stainless steel, offering rust and corrosion resistance suitable for most environments. For coastal or high-humidity locations, 316 stainless steel must be used to ensure enhanced durability and protection against salt exposure.
- All exposed hardware finishes must be approved prior to production.
- Leveling glides must be heavy-duty, non-rust nylon, sized and colored to match the base or leg finish.
- Units must be properly packaged to prevent damage or soiling during transit.
- Shipping boxes must be labeled with property name, item number, PO number, and spec number.
- All products must be designed to fit within service elevators, corridors, and doorways. If not, items must be shipped in knock-down state for on-site assembly.
- Manufacturers must submit scaled shop drawings with full details (plans, elevations, sections, materials, finishes, hardware, dimensions).
- Finish samples must be submitted on appropriate substrates for approval prior to production.
- Review time for submittals is 5 business days.
- All substitutions or changes must be approved in writing by the designer.
- Coordinate with general contractor to confirm elevator cab sizes, corridor widths, and mounting heights.
- Manufacturers must ensure products are structurally sound, properly weighted to prevent tipping, and bolted where required (e.g., earthquake zones).

SINK: SERANO  
UNDERMOUNT VITREOUS CHINA WHITE  
THE 3D MODEL IS FOR REFERENCE ONLY

COUNTERTOP: BLANCO CARRARA QUARTZ  
THREE WAYS SINK CUTOUT  
- NO FAUCET  
- SINGLE FAUCET  
- 3-PIECE FAUCET

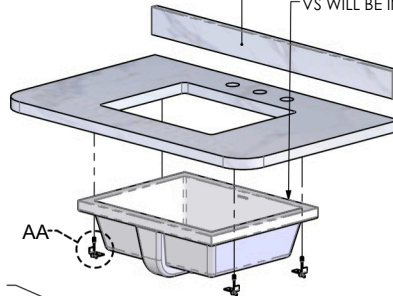
WOODEN BODY:  
MARINE GRADE PLYWOOD  
W/ ROUND PROFILE TAMBOUR  
WOOD VENEER - AVAILABLE IN TWO FINISHES  
- SABRE OAK - MEDIUM FINISH,  
- LUXE OAK - LIGHT FINISH

LED LIGHT STRIP (2200K), FLUX = 70.857 LM  
+ MOTION SENSOR @ UNDER CABINET LIGHTING

PERSPECTIVE VIEW

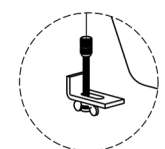
BACK SPLASH WILL BE INSTALLED IN FIELD

VS WILL BE INSTALLED IN FIELD



DUAL POWER OUTLETS  
1- USB, 1- USB-C

LAVATORY UNDERMOUNT KIT



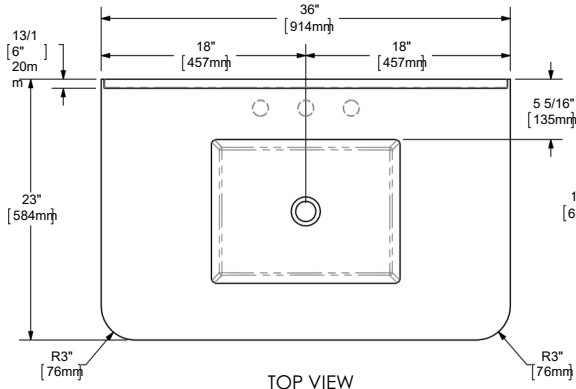
DRAWER INTERIOR:  
PLYWOOD WITH DOVETAIL CONSTRUCTION.  
BLUM-18" PUSH-ALL OPEN UNDER-MOUNT SLIDES.  
TANDEM 560 H FULL EXTENSION, LOAD BEARING CAPACITY UP TO 30 KG



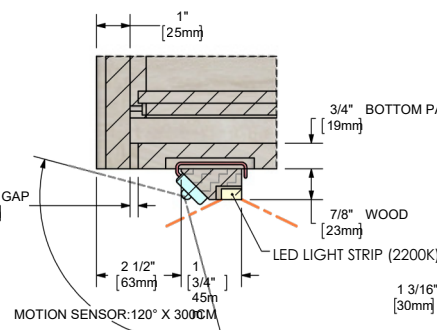
TIP-ON BLUMOTION units and triggers

WALL MOUNTED W/ STEEL BRACKET  
SILICONE BUMPERS  
45 DEGREE HINGES  
STEEL TILT BOX-W27"  
MATTE BLACK POWDER COAT

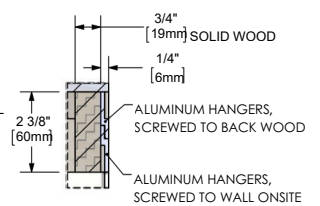
DRAWER FRONT



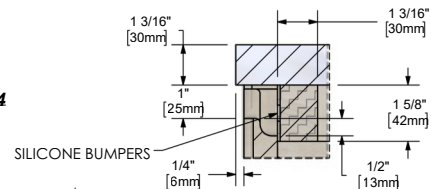
TOP VIEW



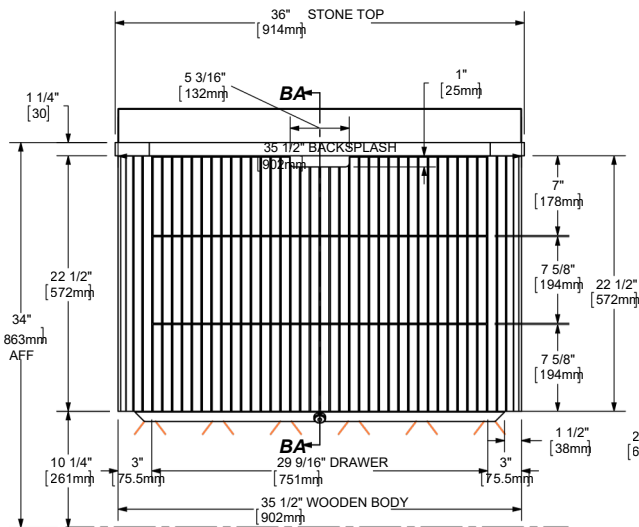
DETAIL AB 1:4



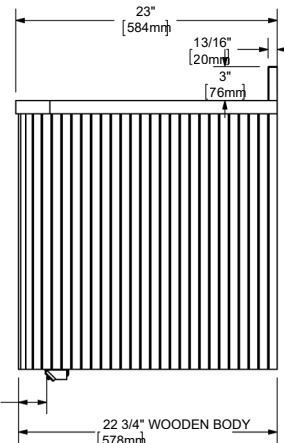
DETAIL AD 1:4



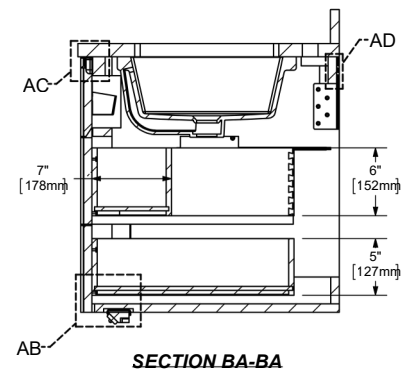
DETAIL AC 1:4



FRONT VIEW



RIGHT VIEW



SECTION BA-BA